

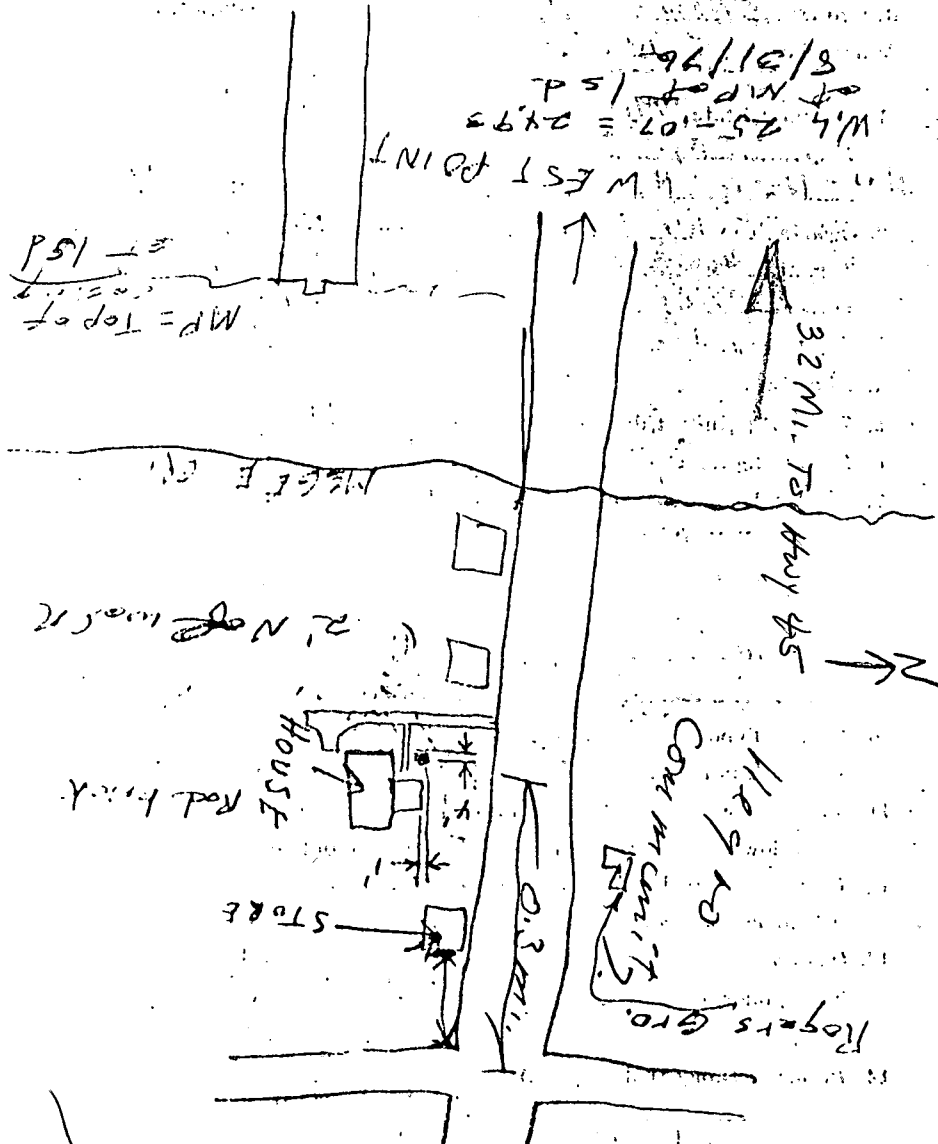
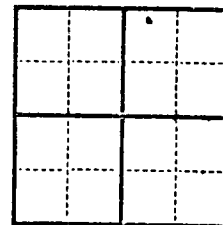
9-185-July 1935
Revised

UNITED STATES
DEPARTMENT OF THE INTERIOR
GEOLOGICAL SURVEY
WATER RESOURCES BRANCH

WELL SCHEDULE

Date June 21, 1940 Field No. V-113
Record by Um F. Carter Office No. N-8
Source of data Monroe Fort (Drillers Helper)

1. Location: State Miss County Clay
Map Clay County
NW 1/4 NE 1/4 sec. 18 T 17 S R 2 E
2. Owner: Wash. Davis Address West Point
Tenant _____ Address _____
Driller C.T. White Address deceased
3. Topography low, fertile
4. Elevation 485 ft. above MSL BAR
205 ft. below
5. Type: Dug, drilled, driven, bored, jetted 1926
6. Depth: Rept. 6.10 ft. Meas. _____ ft.
7. Casing: Diam. 2 in., to _____ in., Type _____
Depth 610 ft., Finish Pers. Pipe
8. Chief Aquifer Tuscaloosa From _____ ft. to _____ ft.
Others _____
9. Water level _____ ft. rept. _____ 19 _____ above
meas. _____ below
which is _____ ft. above
below surface
10. Pump: Type natural flow Capacity _____ G. M.
Power: Kind _____ Horsepower _____
11. Yield: Flow 5 G. M., Pump _____ G. M., (meas.) Rept. Est. _____
Drawdown _____ ft. after _____ hours pumping _____ G. M.
12. Use: Dom, Stock, PS., RR. Ind, Irr., Obs. used for cotton gin
Adequacy, permanence _____
13. Quality _____ Temp 67 °F.
Taste, odor, color contains iron Sample Yes
Unfit for _____ No
14. Remarks: (Log, Analyses, etc.) Well #21 WSP 526 P130



CLAY TB

U.S. DEPT. OF INTERIOR
GEOLOGICAL SURVEY
WATER RESOURCES DIVISION
GROUND WATER SITE INVENTORY
WATER-LEVEL DATA

WELL NO. J8

MP HEIGHT _____

Clay County

*Wash Davis
211 Blvd*

Site Ident. No. 33.36.18.08.83620.01

R - 234 *

T - A *

DATE	WATER LEVEL (BELOW LSD)	STATUS	METHOD	HOLD	CUT	DEPTH BELOW MP	REMARKS	DATE PUNCHED	DATE ENTERED
235 # 1,010.6119.78 *	237 - 31.19 *	238 - *	239 - *						
235 # / / *	237 - . . . *	238 - *	239 - *						
235 # 1,210.111.982 *	237 - 1.18.80 *	238 - *	239 - *						
235 # / / *	237 - . . . *	238 - *	239 - *						
235 # / / *	237 - . . . *	238 - *	239 - *						
235 # / / *	237 - . . . *	238 - *	239 - *						
235 # / / *	237 - . . . *	238 - *	239 - *						
235 # / / *	237 - . . . *	238 - *	239 - *						
235 # / / *	237 - . . . *	238 - *	239 - *						
235 # / / *	237 - . . . *	238 - *	239 - *						
235 # / / *	237 - . . . *	238 - *	239 - *						
235 # / / *	237 - . . . *	238 - *	239 - *						
235 # / / *	237 - . . . *	238 - *	239 - *						
235 # / / *	237 - . . . *	238 - *	239 - *						
235 # / / *	237 - . . . *	238 - *	239 - *						
235 # / / *	237 - . . . *	238 - *	239 - *						
235 # / / *	237 - . . . *	238 - *	239 - *						
235 # / / *	237 - . . . *	238 - *	239 - *						
235 # / / *	237 - . . . *	238 - *	239 - *						
235 # / / *	237 - . . . *	238 - *	239 - *						
235 # / / *	237 - . . . *	238 - *	239 - *						
235 # / / *	237 - . . . *	238 - *	239 - *						
235 # / / *	237 - . . . *	238 - *	239 - *						
235 # / / *	237 - . . . *	238 - *	239 - *						
235 # / / *	237 - . . . *	238 - *	239 - *						
235 # / / *	237 - . . . *	238 - *	239 - *						
235 # / / *	237 - . . . *	238 - *	239 - *						
235 # / / *	237 - . . . *	238 - *	239 - *						
235 # / / *	237 - . . . *	238 - *	239 - *						
235 # / / *	237 - . . . *	238 - *	239 - *						

Method of Measurement **239 =** A C E G H L M R S T V Z
 airline, calibrated, estimated, pressure, calibrated, geophysical, manometer, reported, steel, electric, calibrated other
 airline gage pressure gage logs tape tape electric tape

Site Status **238 =** D E F G H O P R S T V X Z
 dry, flowed recently flowing, nearby, nearby, obstruction, pumping, recently, nearby, nearby, foreign, surface-water, other
 recently flowing recently flowing pumped pumped recently pumped substances effect