

LIFT

R=42* T= A M * Lift type 43# * Intake 44= * Power type 45= *
 Date 38= / / H.P. 46= *

LOGS

R=198* T= A M * Log 199# * Top 200= * Bot 201= *
 R=198* T= A M * Log 199# * Top 200= * Bot 201= *
 R=189* T= A M * E Log No. 190# * 191= M I S S D I S T *

ANAL.

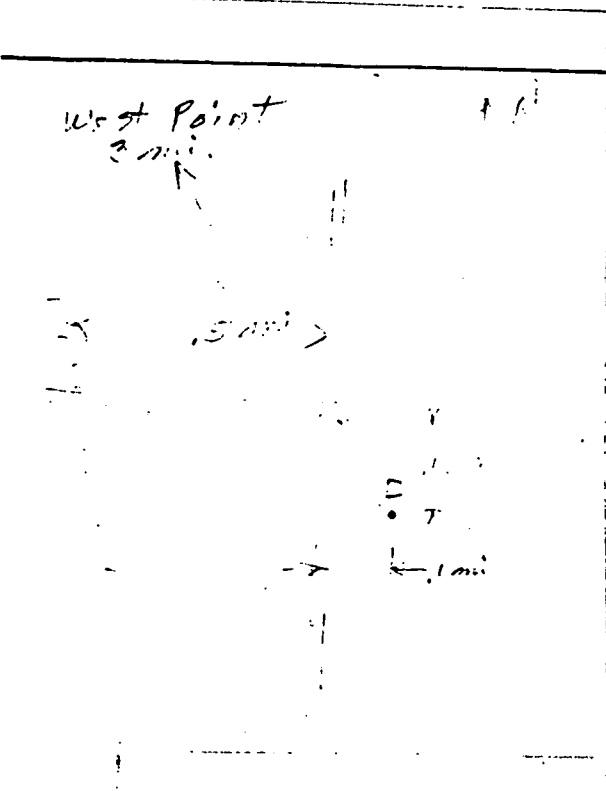
R=114* T= A M * Year 115# * Type 120= *

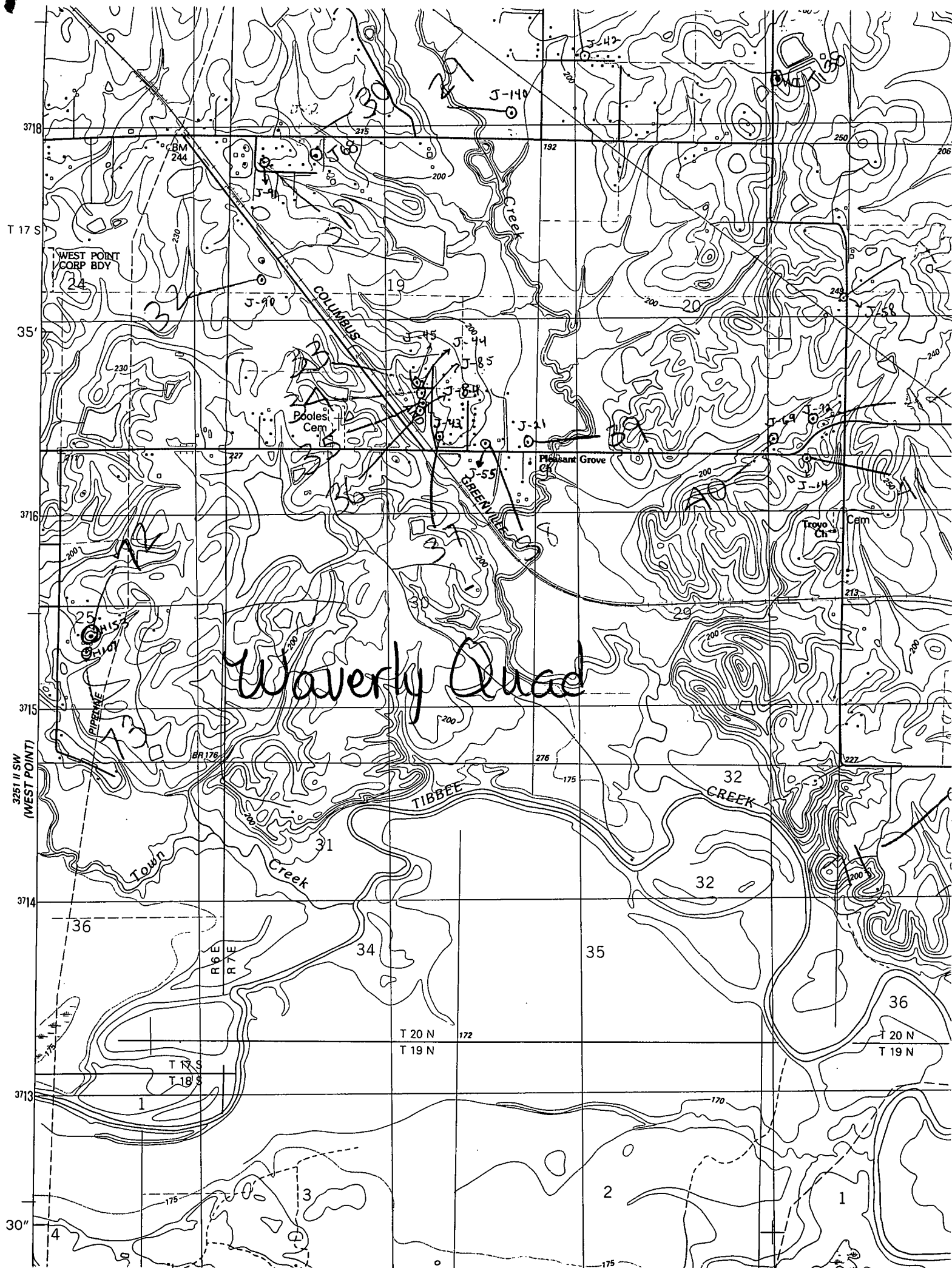
AQUIFERS

R=90* T= A M * 256# 1 * Top 91= * Bot 92= *
 Unit ID 93= Z.I.I.E.U.T.W * Name of Unit _____
 R=90* T= A M * 256# 1 * Top 91= * Bot 92= *
 Unit ID 93= * Name of Unit _____

HYDRAULICS

R=98* T= A M * 99# 1 * Unit tested 100= *
 R=105* T= A M * 99# 1 * Test No. 106# *
 107= * Transmissivity (gal/d)/ft _____
 108= * Hydraul. cond. (gal/d)/ft² _____
 110= * Storage coeff. Boundaries _____





Waverly Quad

WEST POINT
CORP BDY

COLUMBUS

TIBBEE
CREEK

32
CREEK

Poole's
Cam

Pleasant Grove

Troy
Cam

3718

T 17 S

35'

3716

3715

3251 II SW
(WEST POINT)

3714

3713

30"

T 20 N
T 19 N

T 20 N
T 19 N

R 6 E
R 7 E

36

34

35

36

T 17 S
T 18 S

3

2

1

BM
244

J-140

J-90

J-45

J-44

J-8.5

J-73

J-21

J-55

J-14

J-58

25

BR 176

276

175

227

30

31

32

200

36

1

175

175

170

3718

192

250

206

230

230

19

19

200

20

240

240

200

227

200

200

200

200

200

213

200

200

200

30

276

175

200

36

34

35

36

1

175

175

170

3718

192

250

206

230

230

19

19

200

20

240

240

200

227

200

200

200

200

200

213

200

200

200

30

276

175

200

36

34

35

36

1

175

175

170

3718

192

250

206

230

230

19

19

200

20

240

240

200

227

200

200

200

200

200

213

200

200

200

30

276

175

200

36

34

35

36

1

175

175

170

3718

192

250

206

230

230

19

19

200

20

240

240

200

227

200

200

200

200

200

213

200

200

200

30

276

175

200

36

34

35

36

1

175

175

170

3718

192

250

206

230

230

19

19

200

20

240

240

200

227

200

200

200

200

200

213

200

200

200

30

276

175

200

36

34

35

36

1

175

175

170

3718

192

250

206

230

230

19

19

200

20

240

240

200

227

200

200

200

200

200

213

200

200

200

30

276

175

200

36

34

35

36

1

175

175

170

3718

192

250

206

230

230

19

19

200

20

240

240

200

227

200

200

200

200

200

213

200

200

200

30

276

175

200

36

34

35

36

1

175

175

170

3718

192

250

206

230

230

19

19

200

20

240

240

200

227

200

200

200

200

200

213

200

200

200

30

276

175

200

36

34

35

36