

OIL & GAS WELL SCHEDULE

County: 25  
Well No.: E604

Company: Larco Drilling Co. + Patrick Pet Corp

Well: # 1 R.F. McFadden

Location: 3274' FWL + 1587' FSL <sup>irreg. NW/SE?</sup> S36 T16S R5E

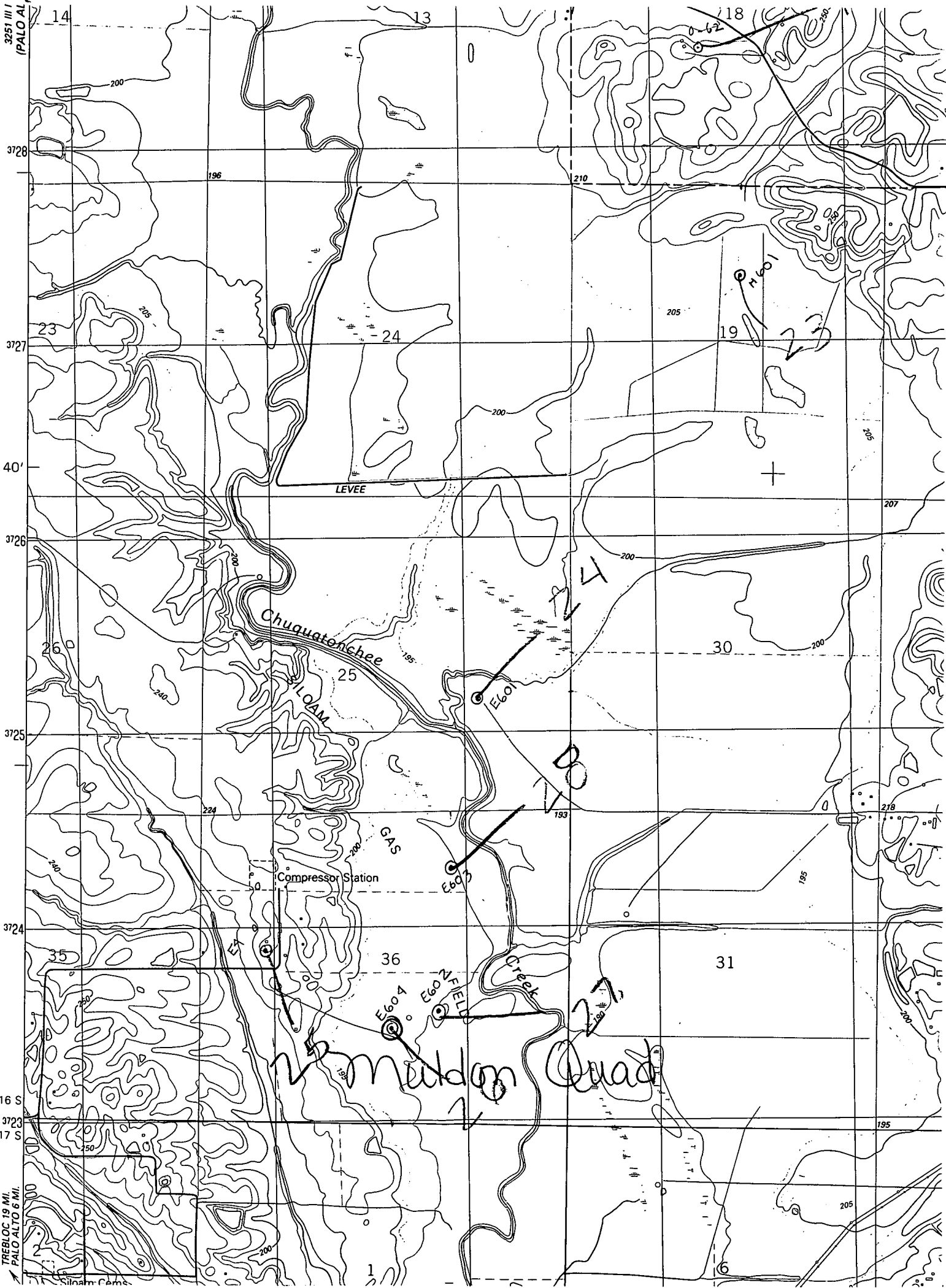
Elevation:

G.L.: 193'

D.F.: 199'

K.B.: 200'

3251 III / (PALO ALTO)



T 16 S  
3723  
T 17 S

TREBLOC 19 MI.  
PALO ALTO 6 MI.  
Sinam Camo.