

OIL & GAS WELL SCHEDULE

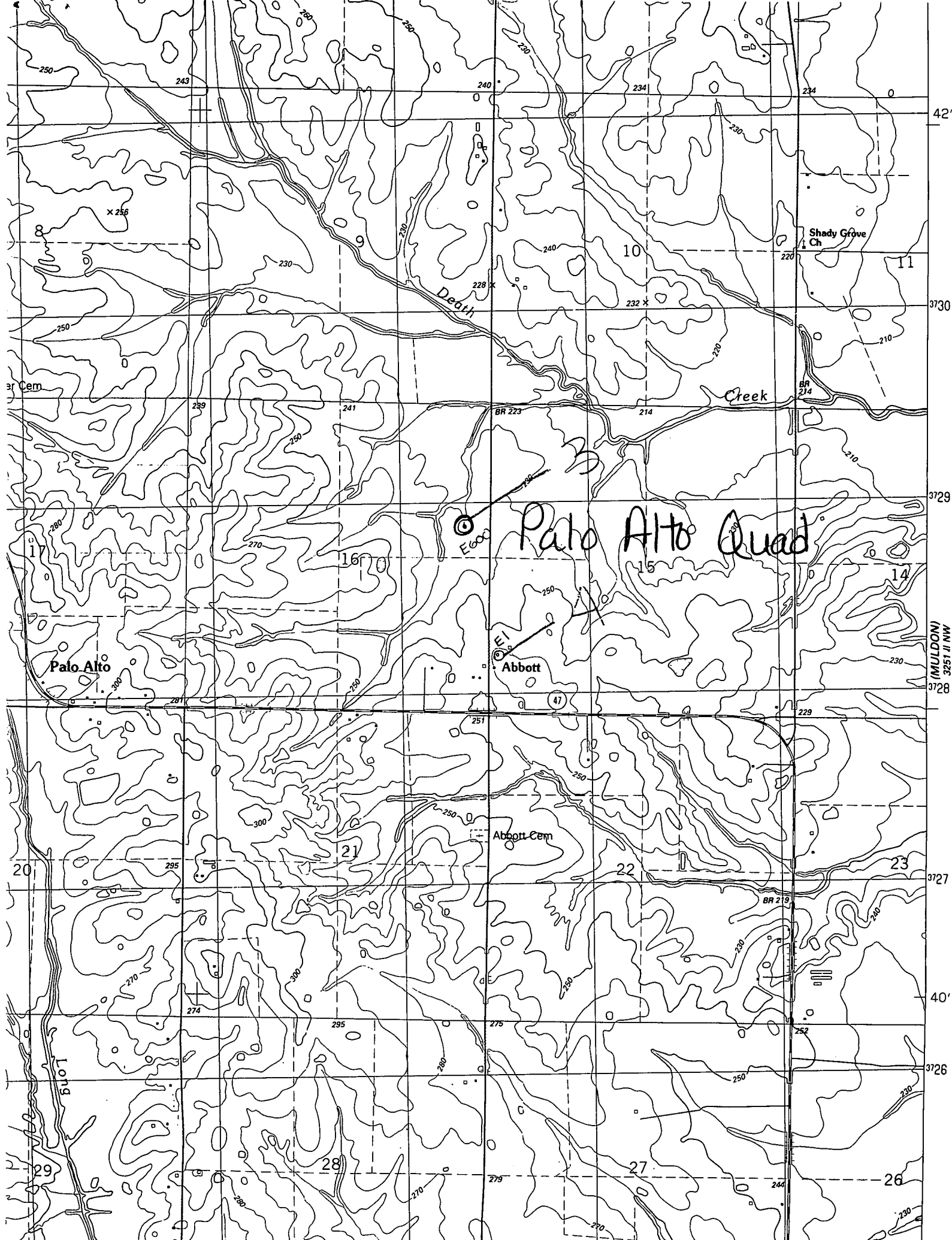
County: 25  
Well No.: E600

Company: Crump, Hadaway, Pepper Trust

Well: Calvert #1

Location: <sup>NW</sup> SE/SE/NE S16 T16S R5E

Elevation: 232' (topo)  
G.L.: 227' D.F.: \_\_\_\_\_ K.B.: 244'



Palo Alto Quad

(MULDON)  
3251 J NW  
3728