

OIL & GAS WELL SCHEDULE

County: 25
Well No.: D600

Company: Pruet / Champlin / Elf Aquitaine

Well: #1 Kellogg 5-7 NE/NE/SW/NE

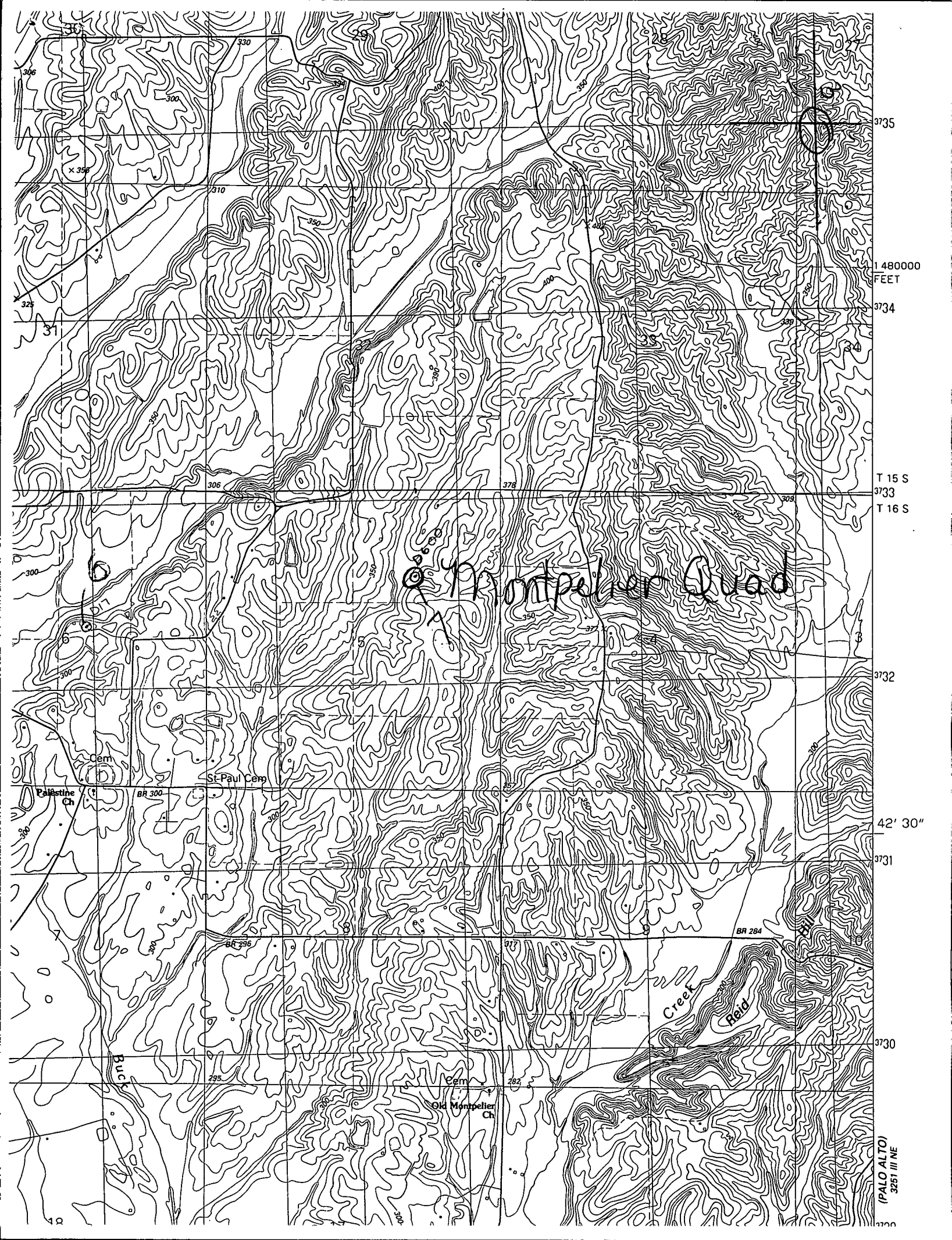
Location: 1500' ENL + 1500' FEL S5 T16S R4E

Elevation:

G.L.: 337'

D.F.: 349'

K.B.: 350'



3735

1480000
FEET

3734

T 15 S

3733

T 16 S

Montpelier Quad

3732

42' 30"

3731

3730

(PALO ALTO)
3251 III NE

3729