

OIL & GAS WELL SCHEDULE

County: 25

Well No.: C601

Company: Grace Petroleum & American Quasar

Well: DAVIS 32-7

NE/NE/NW/SE

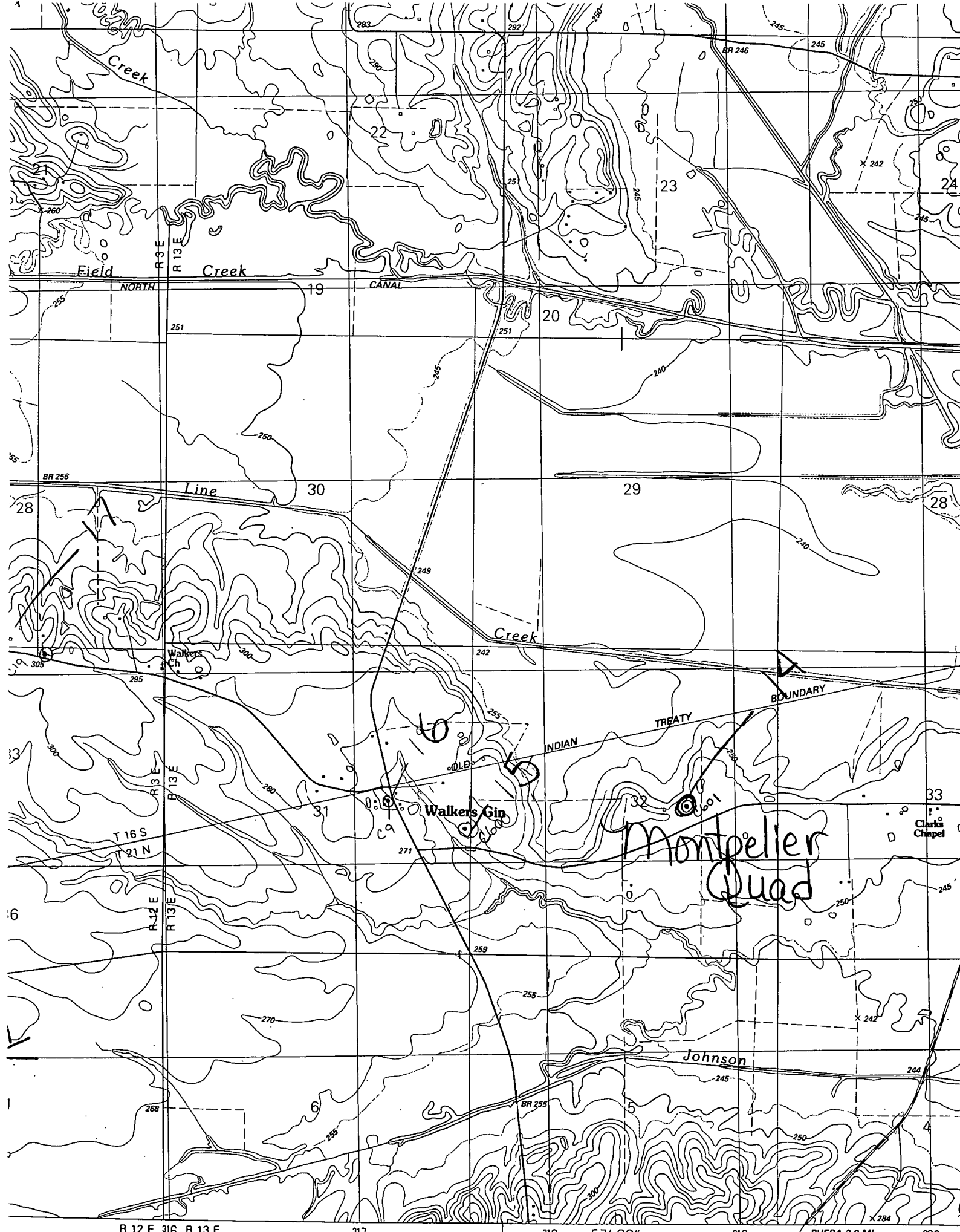
Location: 2630' FNL & 1515' FEL S32 T21 N R13E

Elevation:

G.L.: 262'

D.F.: 277'

K.B.: 278'



R 12 E 316 R 13 E

317

318

57' 30"

319

PHEBA 2.8 MI.

320