

OIL & GAS WELL SCHEDULE

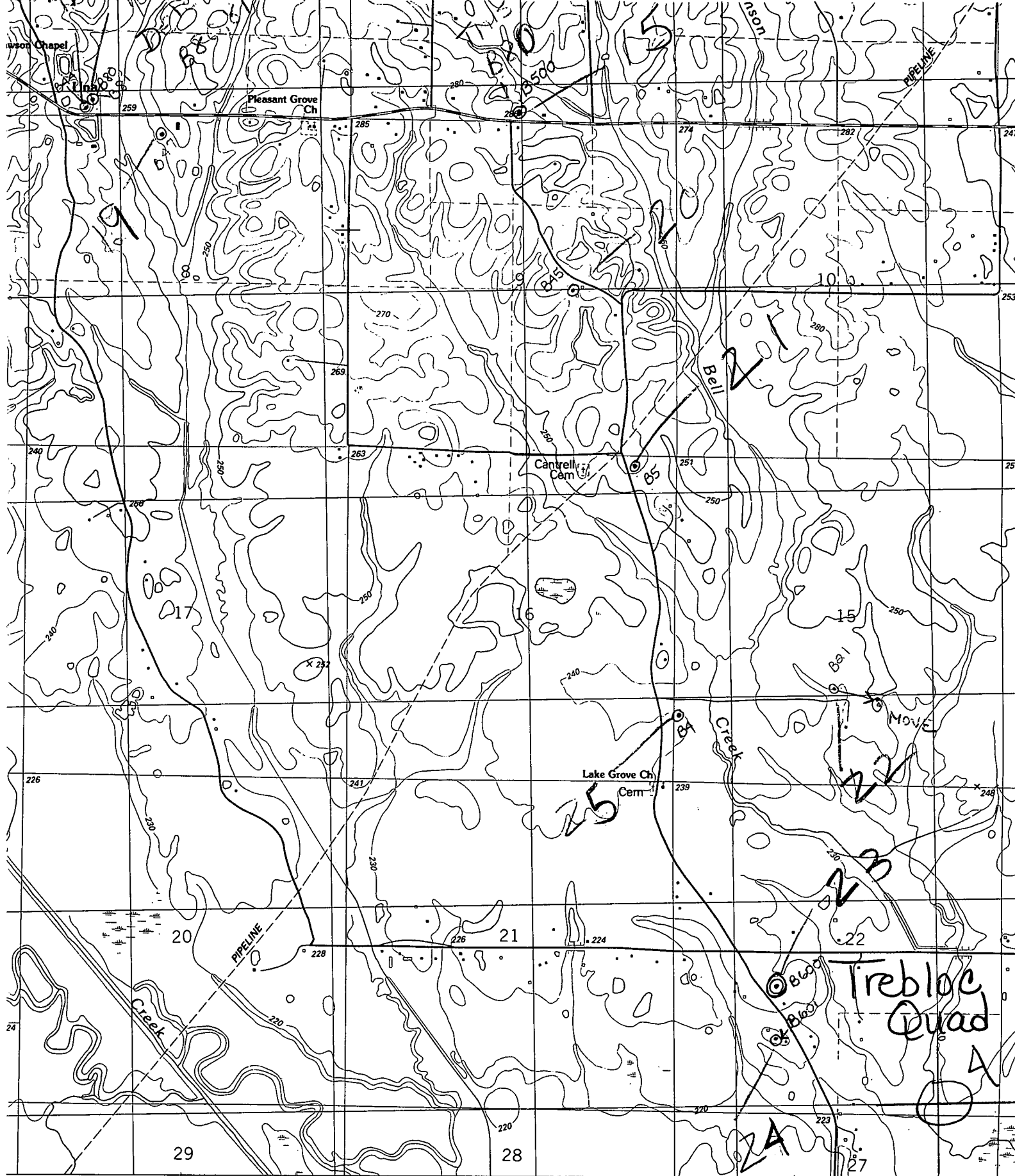
County: 25  
Well No.: B600

Company: Henry L. Hahn, Jr. & Hyco Oil Co.

Well: #1 Bessie Brownlee

Location: NW/NE/SW 322 T15S R5E

Elevation:  
G.L.: 233'      D.F.: 240'      K.B.: 241'



00  
 6000 7000 8000 9000 10 000  
 1000 2000  
 333 47' 30" 335 336 337 000E  
 INTERIOR—GEOLOGICAL SURVEY, RESTON, VIRGI

**ROAD CLASSIFICATION**

- |  |                               |
|--|-------------------------------|
| Primary highway,<br>hard surface .....   | Light-duty ro<br>improved sur |
| Secondary highway,<br>hard surface ..... | Unimproved                    |

