

OIL & GAS WELL SCHEDULE

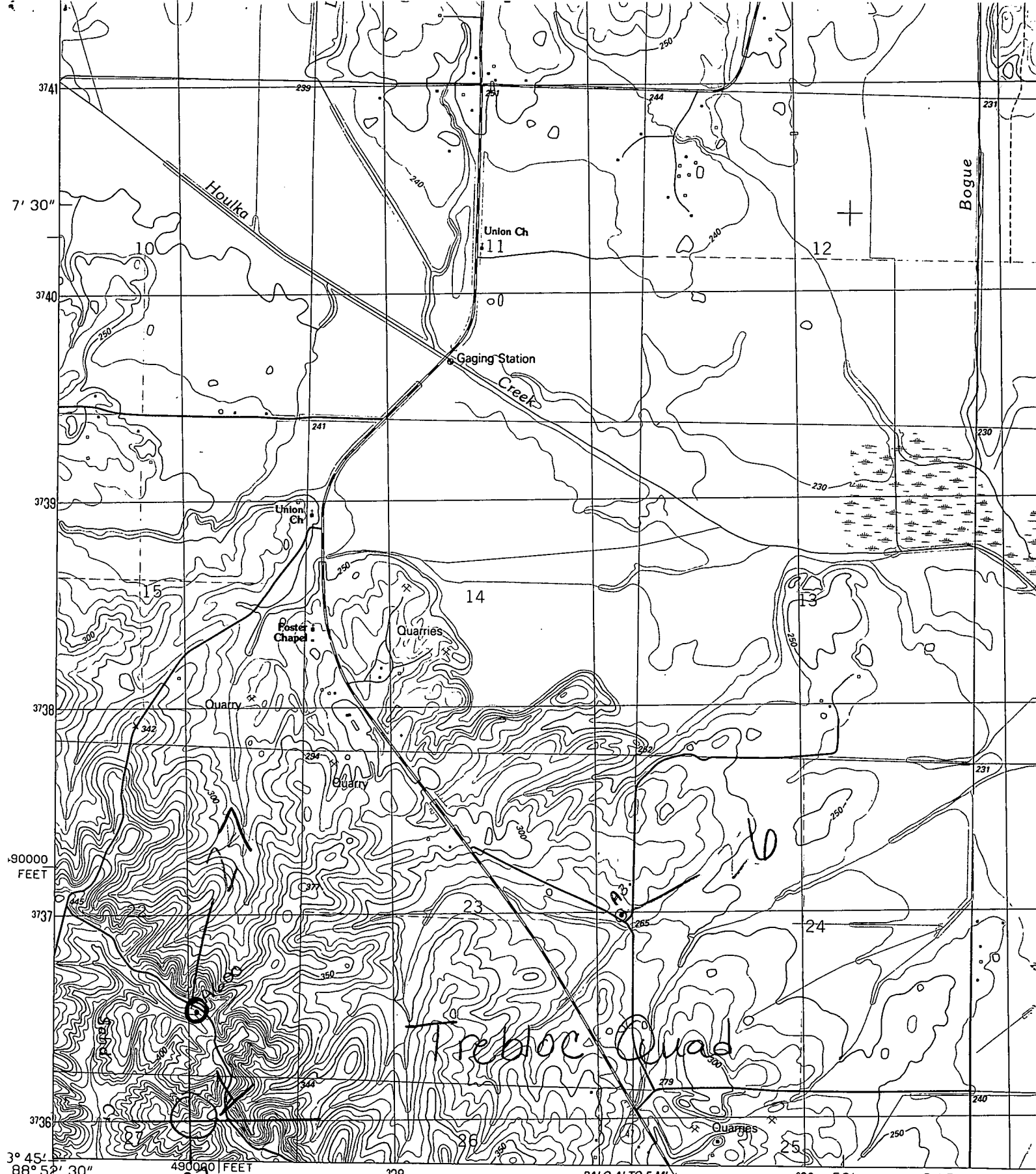
County: 25
Well No.: A600

Company: Union Production Co.

Well: # 1 J. H. Henderson

Location: 990' N+E of SW/C of SW/SE S22 T15S R4E

Elevation:
G.L.: 430 D.F.: 437(?) K.B.: _____



Produced by the United States Geological Survey
 Control by USGS and NOS/NOAA
 Topography by photogrammetric methods from aerial photographs taken 1955. Revised from aerial photographs taken 1983
 Field checked 1986. Map edited 1987
 Projection and 10,000-foot grid ticks: Mississippi coordinate system, east zone (transverse Mercator)
 1000-meter Universal Transverse Mercator grid, zone 16
 1927 North American Datum

PALO ALTO 5 MI.
 13 MI. TO MISS. 50

