



MISSISSIPPI DEPARTMENT OF ENVIRONMENTAL QUALITY

WELL SCHEDULE

FIPS: 19

WELL: D68

LOG NO.:

Recorded by: PPhillips Data Source: Lignite mine files Driller's log Date: 8/20/03

County: Choctaw Permit No.: DOH No.:

Quad: Reform Elevation: 524

1/4: SE 1/4: NW 1/4: NW Sec.: 35 T: 18N R: 10E

Plotted on quad?: In field? From drillers log? From permit?

Latitude: Longitude: GPS? 8/13/01 From Quad?

Primary aquifer: WLCXL Secondary aquifer:

Use: IT? Well status: Local well name:

Owner: ms Lignite Corp?

Date completed: 4/2/00 Driller: Geoscience Eng. Well depth: 330 Hole Depth: 330

Pump type: S Power type: E Pump capacity: HP:

Casing interval: 0-270 Casing length: 270' Casing diameter: 6" Casing type: PVC

Casing interval: Casing length: Casing diameter: Casing type:

Screen interval: 270-330 Screen length: 60' Screen diameter: 6" Screen type: PVC

Screen interval: Screen length: Screen diameter: Screen type:

Type of logs: Log interval:

Initial water level: Date: M.P. description:

Water Quality Data? Source: Reliability:

Water Level Data? Source: Reliability:

Pump Test Data? Source: Reliability:

Water Use Data? Source: Reliability:



If well telescopes please sketch and show depths.

GROUND LEVEL


SECTION \_\_\_\_\_

Please indicate well location X.

Pump Capacity (GPM)	No. of Stages	Setting Depth	FT.
PUMP TEST			
Well yielded _____ GPM with			
a drawdown of _____ ft.			
after _____ hours of pumping			

LOG DATA

TYPE OF LOG RUN (Circle One): No Log Run, Electric, Gamma Ray, Density, Sonic, Neutron, Other (Describe) \_\_\_\_\_

Name of Organization Running Log  
No log in files

GEOLOGIC DATA (Office Use Only)

Surface Elev.	Geologic Unit	Unit Thickness	Depth to Top
Subs. SWL	Date	Analysis	Aquifer Test

Driller's Remarks

---



---



---



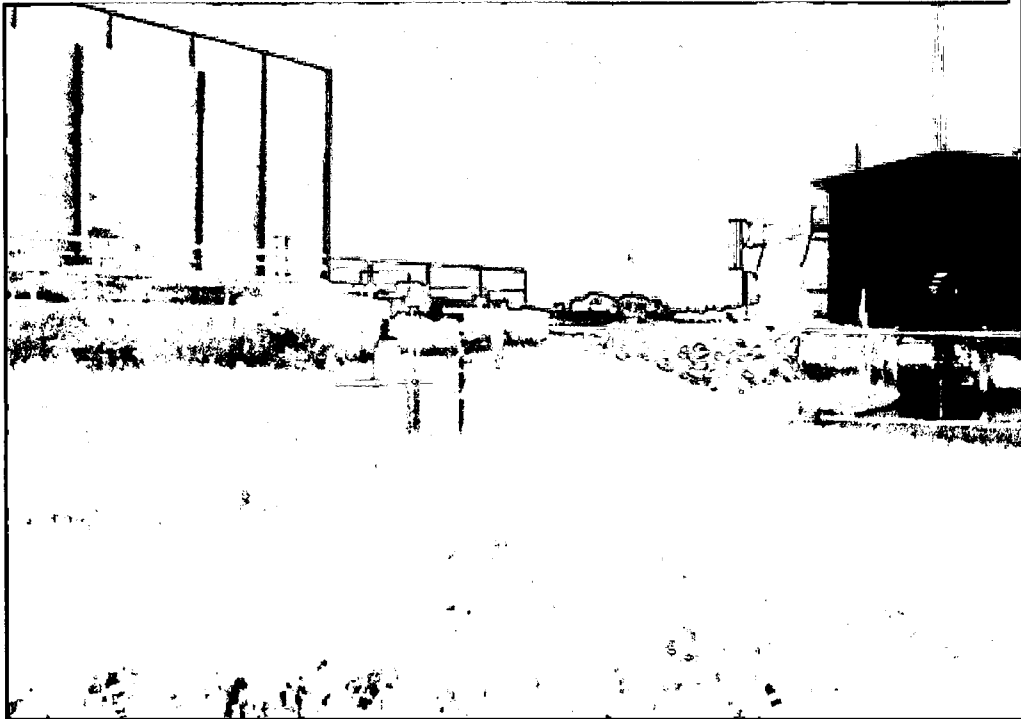
---



---

If more than one screen, show location of each on sketch.

D0068-019. MS Lignite Mining. 4007-LW6 (facility well) 8/13/01



0000-019 MS Light Mining 4000-LV46 (scans) v.11 8/13/01

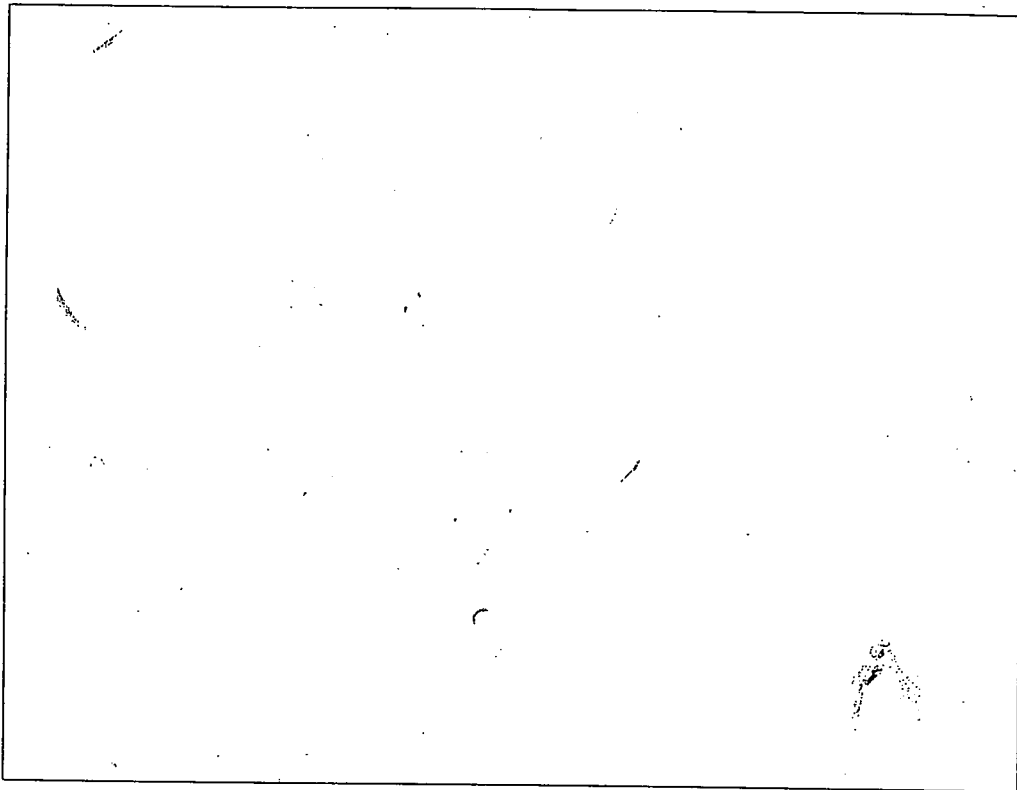
# Water Well Field Data Form

D68. pp 8/03

USGS #/FP 04007-019 County CHOCTAW Health # ? Aquifer LOWER WILCOX

Owner MISSISSIPPI LIGNITE MINING CO. Local Name 4007-LWG (FACILITY WELL)

Quad Map \_\_\_\_\_ Location S Elevation 520



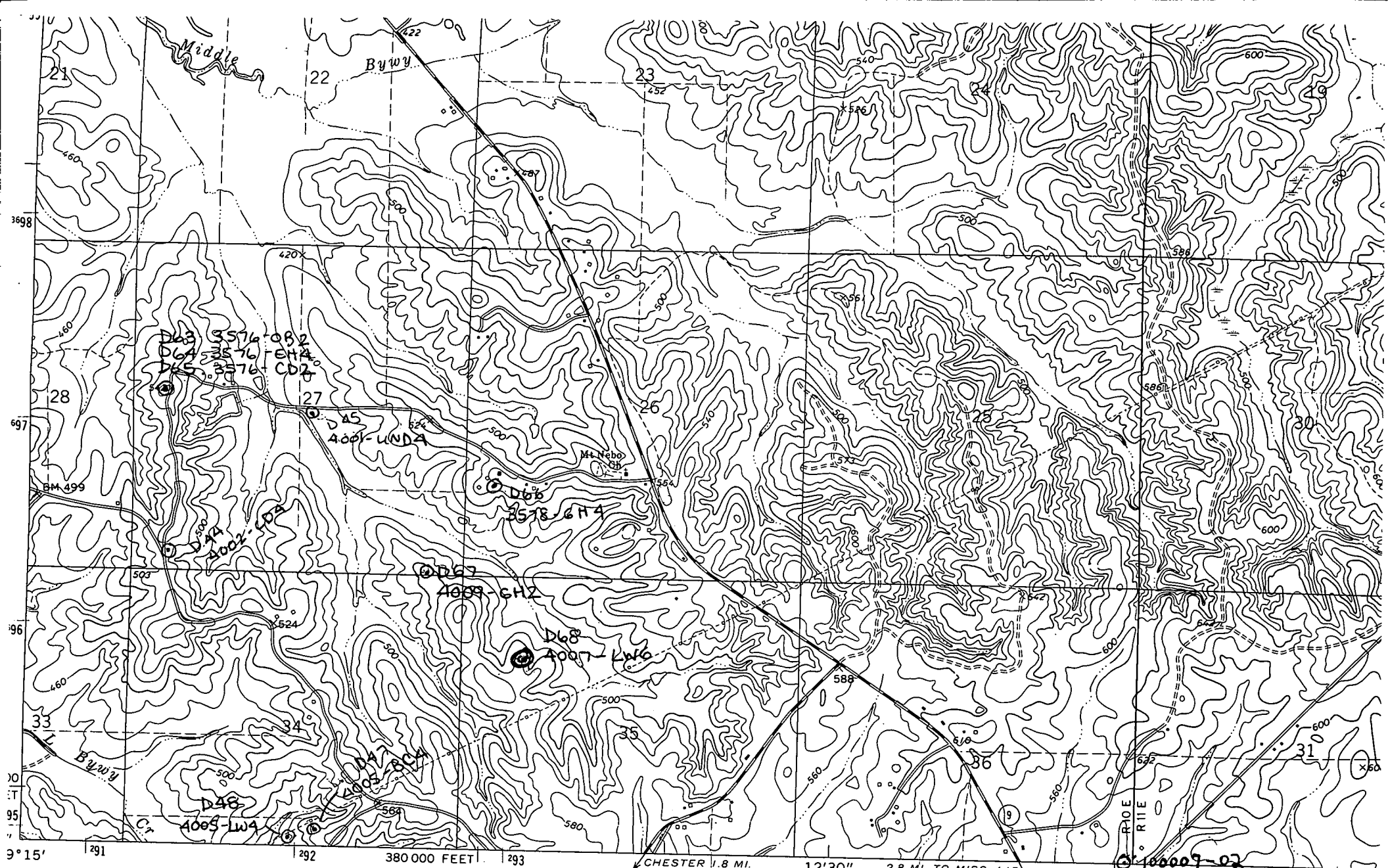
Measuring Point Vent on side of cap.  
3.69 ft above l.s.

Date 8/14/2000 Party JG/CRB/JHW

Remarks Submersible pump  
6 inch casing (PUC)  
WELL LOCATED BEHIND  
OFFICE FOR MINE  
NORHEAST OF BUILDING

Tape Down #	1	2	3	4
Held	180.00	175.00		
Wet	9.58	4.48		
Difference	170.42	170.52		
MP Correction	3.69	3.69		
Water Level	166.73	166.83		

Additional remarks and/or sketches on back (circle if any)



Mapped, edited, and published by the Geological Survey

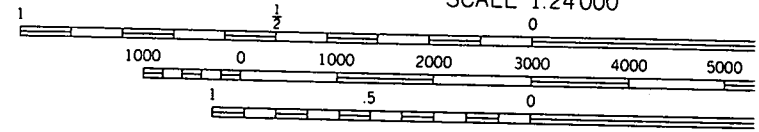
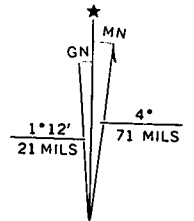
Control by USGS and USC&GS

Topography by photogrammetric methods from aerial photographs taken 1971. Field checked 1972

Projection and 10,000-foot grid ticks: Mississippi coordinate system, east zone (transverse Mercator)

1000-meter Universal Transverse Mercator grid ticks, zone 16, shown in blue. 1927 North American datum

Fine red dashed lines indicate selected features



SCALE 1:24 000  
 (ACKERMAN)  
 3150 1 SW  
 CONTOUR INTERVAL 20 FEET  
 DOTTED LINES REPRESENT 10-FOOT CONTOUR  
 NATIONAL GEODETIC VERTICAL DATUM OF 19: