

MISCELLANEOUS QW DATA

R	T	W	Date of Measurement	Aquifer Sampled	Temp	Value
192	A	738#1	1934 / / / / / / / .	195 / / / / / / / / .	196#00010	197 / / / /
192	A	738#2	1934 / / / / / / / .	195 / / / / / / / / .	196#00095	197 / / / /
192	A	738#3	1934 / / / / / / / .	195 / / / / / / / / .	196#00000	197 / / / /

MISCELLANEOUS LOGS DATA

R	T	W	Log Type	Req. Depth	End Depth
198	A	739#1	1994	200 / 14/5/8	201 / 2/16/0
198	A	739#1	1994	200 / / / / / / .	201 / / / / / / .

MISCELLANEOUS NETWORK DATA

706 = WL, Qw, v, d, &

R	T	W	Req. Year	End Year	Agency Source	Freq.
114	A	730#1	115 / / / / .	116 / / / / .	120=A 117# / / / / .	118 / / .
121	A	730#2	115 / / / / .	116 / / / / .	117 / / / / .	118 / / .

MISCELLANEOUS REMARKS DATA

R	T	W	Date of Remarks	Remarks
183	A	311#1	184 / / / / / / / .	185

DISCHARGE DATA

R	T	W	Pump/Flow	Date	Type	Discharge	So. Capacity
146	A	147#1		148 / / / / / / / .	703 P F	150 / / / / / / .	272 / / / /

GEOHYDROLOGIC DATA

R	T	W	Depth Top	Depth Bot.	Unit Id
90	A	721#1	91 / / / / / .	92 / / / / / .	93 / / / / / / . 304=P

HYDRAULIC DATA

R	T	W	Unit Tested
98	A	790#1	100 / / / / / / / . 103 / / .

ELOG # 32

Calhoun
N 29
? 67
DW 12597

MISSISSIPPI
BOARD OF WATER COMMISSIONERS
416 North State Street
Jackson, Mississippi 39201

WATER WELL DRILLERS LOG

CODED

T.M. PARKS

Calhoun

date well completed 19

firm name

county well located

LANDOWNER: CROSSROADS	description of formations encountered	from	to
water assn.			
Calhoun City, Miss (mailing address)	Clay	0	180
	Chalk & rock	180	760
	shale & clay	760	1020
	Chalk gumbo clay rock	1020	1460
	Rock & sandstone	1460	1500
	Brown clay, gumbo	1500	1560
	Sandy shale	1560	1800
	Sand & Gravel	1800	1900
	Red gumbo	1900	1920
	Gravel, sand & shale	1920	2020
	Good gravel, Red sand	2020	2160
WELL LOCATION:			
sec. 11 T. 22 N. R. 9 E			
10 miles S of Calhoun City			
(distance) (direction) (nearest town)			
WELL PURPOSE: Municipal (home, irrigation, municipal, industrial)			
WELL COMPLETION DATA:			
(1) diameter (inches) 8			
(2) total depth (feet) 2160	TD	(2160)	
(3) static water level (feet) 125 below top of ground.			
(4) casing Steel, 358 (material) (depth)			
(size) If telescope see back.			
(5) screen 42, 2118 (length) (depth to top)			
4, Stainless (size) (material)			
(6) pump 20, 150 (HP) (yield gpm)			
3 Phase converter (type power)			
(7) electric log yes (yes or no)			
MGS (organization running log)			
(8) how well bottom plugged BPU			
DRILLERS REMARKS:			

CODED

Rec'd
12/8/71

DEPARTMENT OF ENVIRONMENTAL QUALITY - OLWR

PUBLIC SUPPLY WELLS PROJECT

GPS LOG

USER NAME(S): Hardin/Phillips DATE: 7/29/97

UNIT DEQ #: _____ FILE #: B072915A

HEALTH DEPT. #: 070005-01 (No tag) ELEV. 357

USGS #: N29 OLWR #: GWI2597

OWNER: Cross Roads W.A QUAD: Calhoun City

LOCATION: SW/NW S 11 T 22N R 9E COUNTY: Calhoun

LOCATION DESCRIPTION: 1.6 miles east of Hwy 9 on County
Rd 361. At water tower

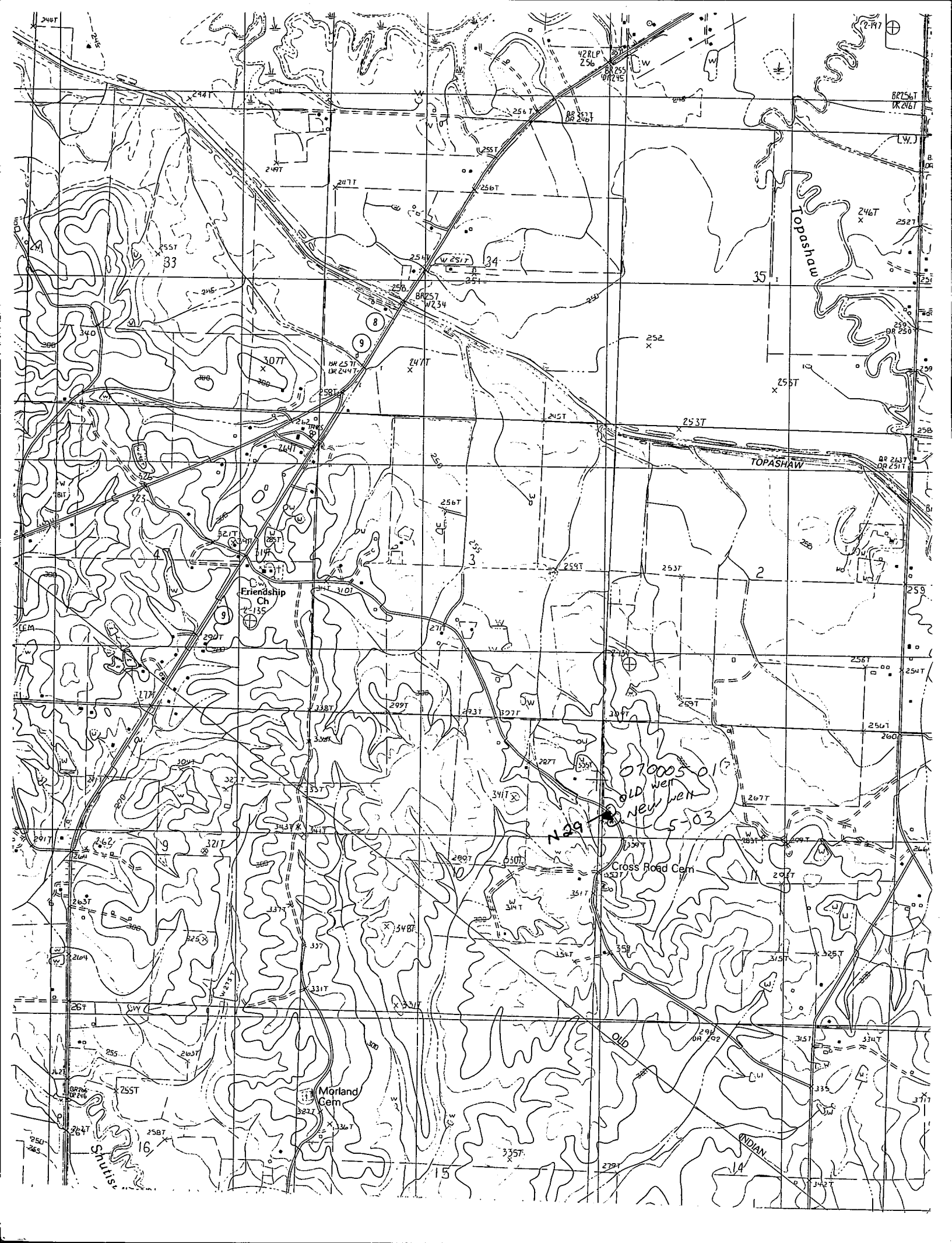
CASING DIA: _____ PUMP TYPE & SIZE: Submersible

GPS FIELD LOCATION: LAT. 33°47'24.3"N LONG. 89°19'56.9"W

GPS CORRECTED LOCATION: LAT. 33789976 LONG. 893325577

REMARKS: Well measured 10' NE of well

Older well. Wells are about 120' apart



Friendship Ch
2-135

Morland Cem
3-217

Cross Road Cem
2-527

070005-016
OLD WELLS
NEW WELLS
5-03
N29

Topashaw

INDIAN

33

34

35

15

14

2407

2417

BR256T
VK 246T

428LP
256

BR 255T
OR 245T

255T

256T

254T

W 251T

256

BR 257
OR 234

247T

258T

256T

256T

256T

256T

256T

256T

256T

256T

256T

256T

256T

256T

256T

256T

256T

256T

256T

256T

256T

256T

256T

256T

LYJ

B OR

246T

252T

251T

251T

251T

251T

251T

251T

251T

251T

251T

251T

251T

251T

251T

251T

251T

251T

251T

251T

251T

251T

251T

251T

251T

251T

251T

251T

251T

251T

251T

251T

251T

251T

251T

251T

251T

251T

251T

251T

251T

251T

251T

Don

EM

EM

EM

EM

EM

EM

EM

BR 263T
OR 251T

259

259

259

259

259

259

259

259

259

259

259

259

259

259

259

259

259

259

259

259

259

259

259

259

259

259

259

259

259

259

259

259

259

259

259

259

259

259

259

259

259

259

259

259

2407

2447

2497

245

340

306

323

327

327

327

327

327

327

327

327

327

327

BR 263T
OR 251T

259

259

259

259

259

259

259

259

259

259

259

259

259

259

259

259

259

259

259

259

259

259

259

259

259

259

259

259

259

259

259

259

259

259

259

259

259

259

259

259

259

259

259

259

2407

2447

2497

245

340

306

323

327

327

327

327

327

327

327

327

327

327

BR 263T
OR 251T

259

259

259

259

259

259

259

259

259

259

259

259

259

259

259

259

259

259

259

259

259

259

259

259

259

259

259

259

259

259

259

259

259

259

259

259

259

259

259

259

259

259

259

259

2407

2447

2497

245

340

306

323

327

327

327

327

327

327

327

327

327

327

BR 263T
OR 251T

259

259

259

259

259

259

259

259

259

259

259

259

259

259

259

259

259

259

259

259

259

259

259

259

259

259

259

259

259

259

259

259

259

259

259

259

259

259

259

259

259

259

259