

GW00836

1975

FORM 9-1642 (1-68)

Well No. 520

WELL SCHEDULE

U. S. DEPT. OF THE INTERIOR GEOLOGICAL SURVEY WATER RESOURCES DIVISION

MASTER CARD

Record by B.E. Wasson Source of data Obs. Miller Sept. 1959 Date 1959 Map Singleton

State 28 County (or town) 04

Latitude: 32° 59' 23" N Longitude: 089° 33' 08" W Sequential number: 1

Lat-long accuracy: 20 T. 13 S, R. 7 E, Sec. 14, NE NE 1/4, NW 1/4

Local well number: SC20AB1413NO7E Other well number: \_\_\_\_\_

Local use: 0.64 Owner or name: Texas Eastern Trans.

Owner or name: TEXAS EASTERN Address: \_\_\_\_\_

Ownership: County, Fed Gov't, City, Corp or Co, Private, State Agency, Water Dist N

Use of water: (A) Air cond, Bottling, Comm, Dewater, Power, Fire, Dom, Irr, Med, Ind, P S, Rec, (S) Stock, Instit, Unused, Repressure, Recharge, Desal-P S, Desal-other, Other N

Use of well: (A) Anode, Drain, Seismic, Heat Res, Obs, Oil-gas, Recharge, Test, Unused, Withdraw, Waste, Destroyed, (W) W

DATA AVAILABLE: Well data 0 Freq. W/L meas: 0 Field aquifer char. 0

Hyd. lab. data: \_\_\_\_\_

Qual. water data; type: \_\_\_\_\_

Freq. sampling: \_\_\_\_\_ Pumpage inventory: yes 0 no, period: \_\_\_\_\_

Aperture cards: \_\_\_\_\_

Log data: \_\_\_\_\_

WELL-DESCRIPTION CARD

SAME AS ON MASTER CARD Depth well: 309 ft Meas. rept accuracy 3

Depth cased: 289 ft Casing Type: \_\_\_\_\_; Diam. in 1.0

Finish: (C) porous concrete, (F) gravel w. (perf.), (G) gravel w. (screen), (H) horiz. gallery, (I) open end, (J) percuss, (K) air rot., (L) air rot., (M) air rot., (N) air rot., (O) air rot., (P) air rot., (Q) air rot., (R) air rot., (S) air rot., (T) air rot., (U) air rot., (V) air rot., (W) air rot., (X) air rot., (Y) air rot., (Z) air rot., other S

Method Drilled: (A) air rot., (B) air rot., (C) air rot., (D) air rot., (E) air rot., (F) air rot., (G) air rot., (H) air rot., (I) air rot., (J) air rot., (K) air rot., (L) air rot., (M) air rot., (N) air rot., (O) air rot., (P) air rot., (Q) air rot., (R) air rot., (S) air rot., (T) air rot., (U) air rot., (V) air rot., (W) air rot., (X) air rot., (Y) air rot., (Z) air rot., other H

Date Drilled: 8/12/59 Pump intake setting: 9.59 ft

Driller: Layne Central Co., Jackson Miss

Lift (type): (A) air, (B) bucket, (C) cent., (D) jet, (E) multiple, (F) multiple, (G) multiple, (H) multiple, (I) multiple, (J) multiple, (K) multiple, (L) multiple, (M) multiple, (N) multiple, (O) multiple, (P) multiple, (Q) multiple, (R) multiple, (S) multiple, (T) multiple, (U) multiple, (V) multiple, (W) multiple, (X) multiple, (Y) multiple, (Z) multiple, other T Deep 0 Shallow 40

Power (type): (A) diesel, (B) elec, (C) gas, (D) gasoline, (E) hand, (F) gas, (G) wind, (H) H.P., (I) H.P., (J) H.P., (K) H.P., (L) H.P., (M) H.P., (N) H.P., (O) H.P., (P) H.P., (Q) H.P., (R) H.P., (S) H.P., (T) H.P., (U) H.P., (V) H.P., (W) H.P., (X) H.P., (Y) H.P., (Z) H.P., other 4 Trans. or meter no. \_\_\_\_\_

Descrip. MP 450 ft above below LSD, Alt. MP \_\_\_\_\_

Alt. LSD: 445 Accuracy: (source) 4

Water Level: 102.68 ft above below MP; Ft below LSD 103 Accuracy: \_\_\_\_\_

Date meas: 3/4/62 Yield: 3.62 gpm 60 Method determined 0

Drawdown: \_\_\_\_\_ ft Accuracy: \_\_\_\_\_ Pumping period \_\_\_\_\_ hrs

QUALITY OF WATER DATA: Iron \_\_\_\_\_ ppm Sulfate \_\_\_\_\_ ppm Chloride \_\_\_\_\_ ppm Hard. \_\_\_\_\_ ppm

Sp. Conduct \_\_\_\_\_ K x 10<sup>6</sup> Temp. \_\_\_\_\_ °F Date sampled \_\_\_\_\_

Taste, color, etc. \_\_\_\_\_

ROLLA COMPUTATION BRANCH

Well No. 520

Well No. 520

Latitude-longitude N  
S  
d m s d m s

**HYDROGEOLOGIC CARD**

SAME AS ON MASTER CARD    Physiographic Province: 03 Section: \_\_\_\_\_

D Drainage Basin: 137 Subbasin: \_\_\_\_\_

Topo of well site: (D) depression, stream channel, dunes, flat, hilltop, sink, swamp, (P) offshore, pediment, hillside, terrace, undulating, valley flat

MAJOR AQUIFER: system \_\_\_\_\_ series TE aquifer, formation, group MW

Lithology: US Origin: 2 Aquifer Thickness: \_\_\_\_\_ ft

Length of well open to: \_\_\_\_\_ ft    Depth to top of: \_\_\_\_\_ ft

MINOR AQUIFER: system \_\_\_\_\_ series \_\_\_\_\_ aquifer, formation, group \_\_\_\_\_

Lithology: \_\_\_\_\_ Origin: \_\_\_\_\_ Aquifer Thickness: \_\_\_\_\_ ft

Length of well open to: \_\_\_\_\_ ft    Depth to top of: \_\_\_\_\_ ft

**Intervals Screened:**

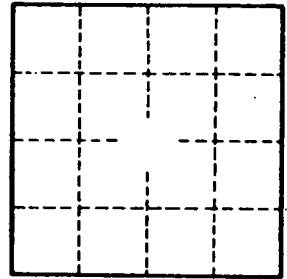
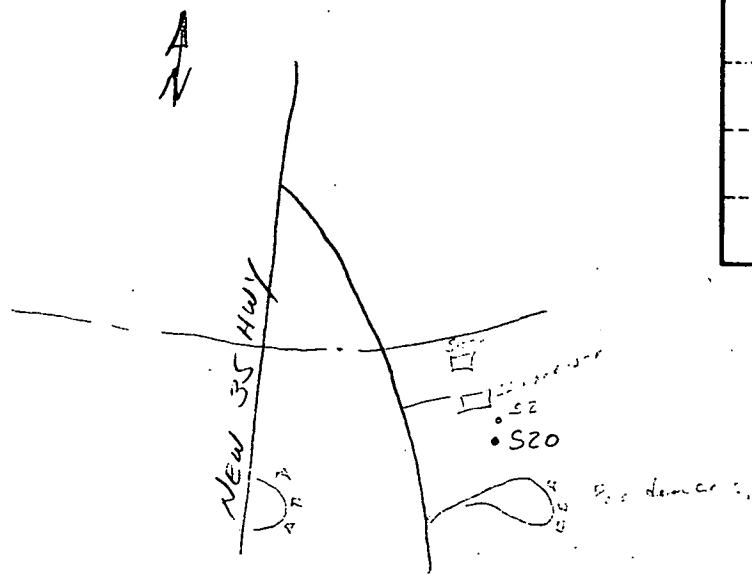
Depth to consolidated rock: \_\_\_\_\_ ft    Source of data: \_\_\_\_\_

Depth to basement: \_\_\_\_\_ ft    Source of data: \_\_\_\_\_

Surficial material: \_\_\_\_\_    Infiltration characteristics: \_\_\_\_\_

Coefficient Trans: \_\_\_\_\_ gpd/ft    Coefficient Storage: \_\_\_\_\_

Coefficient Perm: \_\_\_\_\_ gpd/ft<sup>2</sup>; Spec cap: \_\_\_\_\_ gpm/ft; Number of geologic cards: \_\_\_\_\_



Well No. 520