



Well No. **D15-63**

Latitude-longitude

**HYDROGEOLOGIC CARD**

SAME AS ON MASTER CARD

Physiographic Province: \_\_\_\_\_

Section: **013**

Drainage Basin: **D**

Subbasin: **154**

Topo of well site: (D) depression, stream channel, dunes, flat, hilltop, sink, swamp, (E) offshore, pediment, hillside, terrace, undulating, valley flat

MAJOR AQUIFER:

Series: **T.M.**

aquifer, formation, group

Thickness: **17.3** ft

Lithology: \_\_\_\_\_

Origin: **U.S.**

Thickness: **3** ft

Length of well open to: **62** ft

ft **60**

Depth to top of: **54.1** ft

MINOR AQUIFER:

Lithology: \_\_\_\_\_

Length of well open to: \_\_\_\_\_ ft

Depth to top of: \_\_\_\_\_ ft

Intervals Screened:

**539 - 599 60' of 10" + 8**

Depth to consolidated rock: \_\_\_\_\_ ft

Source of data: \_\_\_\_\_

Depth to basement: \_\_\_\_\_ ft

Source of data: \_\_\_\_\_

Surficial material: \_\_\_\_\_

Infiltration characteristics: \_\_\_\_\_

Coefficient Trans: \_\_\_\_\_

gpd/ft

Coefficient Storage: \_\_\_\_\_

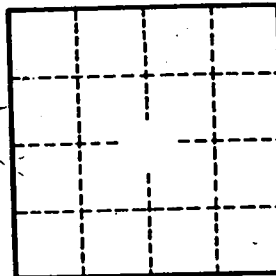
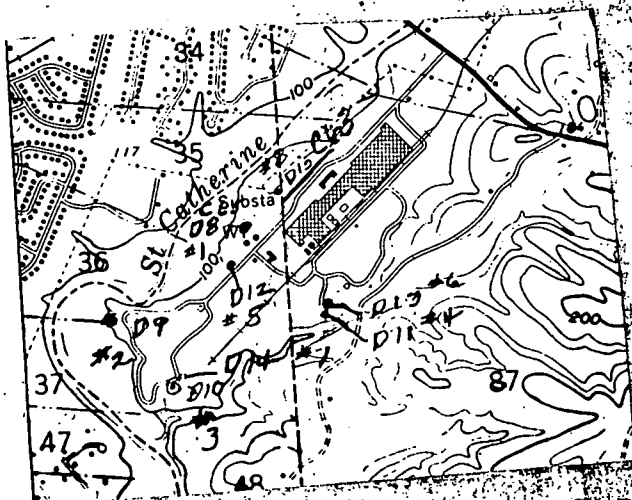
Coefficient Perm: \_\_\_\_\_

gpd/ft<sup>2</sup>; Spec cap: \_\_\_\_\_

gpm/ft; Number of geologic cards: \_\_\_\_\_

*Q<sub>2</sub> 12 M 1958, Q = 548*

*cell from gate house  
L C Vance or art Emrich  
see topo*



D11  
D13

- D8 = C65
- D9 = C66
- D10 = C77
- D12 = C68
- D14 = C69
- D15 = C63

Well No.

**D15**