

Yazoo County
GW 16074

G-160

INSTALLATION REPORT

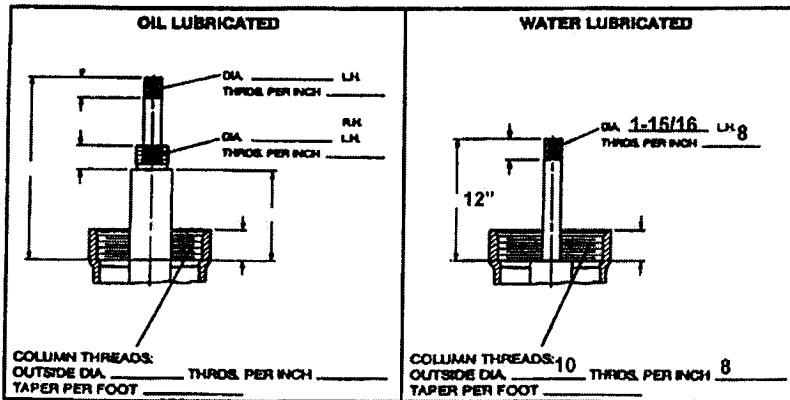
INSTALLED FOR TERRA CONTRACT NO. 12278
 CITY YAZOO CITY COUNTY YAZOO STATE MS
 LOCATION ON HILL BEHIND PLANT NEXT TO GEN-PLANT WELL NO. 17
 DATE INSTALLATION COMPLETED MARCH 22, 2012 NEW INSTALLATION TEST
 (MONTH) (DAY) (YEAR) REPAIR INSPECTION

OIL LUBE MAKE CHRISTENSEN SERIAL NO. ME595810 TYPE HEAD _____
 TOTAL LENGTH COLUMN 260' SIZE 10 X 1-15/16 X _____ IN 10' LENGTHS _____ IN _____ LENGTHS
 OIL/LUBE COMBO COUPLING YES NO NEW STYLE _____ OLD STYLE _____
 TOP SPECIAL COLUMN PIPE DIA 10 X LTH 59% ADJUSTABLE FLANGE YES NO
 TOP SPECIAL OIL TUBING DIA _____ X LTH _____ TOP SPECIAL SHAFT DIA 1-15/16 X LTH 71 1/4"
 MOTOR DRIVE SHAFT DIA 1-15/16 X LTH _____ SHAFTING THREAD PER INCH 8
 COLUMN PIPE LENGTH 9' 9 3/4"

WATER LUBE L & B COMBO COUPLING YES NO NEW STYLE _____ CAST STEEL _____ OLD STYLE _____
 OTHER _____ BEARING OD _____ BEARING ID _____ LENGTH _____
 SLEEVE OD _____ SLEEVE ID _____ LENGTH 7 CENTERS 12

PUMP BOWL SIZE 14 TYPE RJMC FULL DIAMETER IMPELLERS NO. OF STAGES 5
 CAST IRON IMPELLERS CAST IRON BOWL OPEN PORTS
 BRONZE BRONZE CLOSED
 SUCTION 10" LENGTH 20' SUCTION STRAINER YES NO BASE PLATE YES NO
 SHAFT STICK UP 12 TUBING STICK UP _____ LATERAL 1.25
 IS PUMP SEALED? YES NO IF SO, HOW? _____ GROUT _____ WHERE? _____ AROUND BASE PLATE
 LUBRICATOR TYPE CONTINUOUS PRE-LUBE 3/4" CAPACITY _____ QUARTS VOLTAGE _____
 LENGTH OF AIR LINE 260' SIZE 1/4" PLASTIC TUBING COPPER TUBING PIPE
 AIR RELEASE VALVE TYPE 2" CRISPIN IN LINE SURFACE DISCHARGE SIZE 10" SCREWED FLANGED
 DAYTON COUPLING YES NO PRESSURE GAUGE 3 INCH IS PIPE COATED? _____ YES
 CAN WATER BE PUMPED OUTSIDE? YES NO TOTAL SETTING 287' IS COLUMN SCREWED FLANGED

EXISTING THREADED DISCHARGE CONNECTIONS



2000 gpm
you received
6-22-15

Yazoo County
GN 16874

G-160

INSTALLATION REPORT

INSTALLED FOR TERRA CONTRACT NO. 12278

CITY YAZOO CITY COUNTY YAZOO STATE MS

LOCATION ON HILL BEHIND PLANT NEXT TO GEN-PLANT WELL NO. 17

DATE INSTALLATION COMPLETED MARCH 22 2012 NEW INSTALLATION TEST
(MONTH) (DAY) (YEAR) REPAIR INSPECTION

MOTOR MAKE U. S. H.P. 250 FRAME NO. H445 TP

SERIAL NO. S10-344445-0001-6T-01 STYLE HOLLOWSHAFT SPEED 1780

3 PHASE 60 CYCLES 460 VOLTS MOTOR HAS NON-REVERSE RATCHET REVERSE PHASE RELAY

REPAIRS MADE NEW REPAIRED BY _____

MOTOR DRIVE SHAFT SIZE 1-15/16 LENGTH _____ CLUTCH SIZE 1-15/16

THREADS PER INCH 8 BOTTOM THREADS PER INCH _____ TOP

KEYWAY SIZE 1/2 KEYWAY LENGTH 6 BASE DIAMETER _____

CONTROLS MAKE OF STARTER YASKAWA VERI SPEED SIZE ALL START 48 TYPE A

PHASE MONITOR YES NO TYPE _____ TELEMEGAUGE

LIGHTNING ARRESTOR YES NO FUSE SIZE _____

MAIN BREAKER SIZE 400 AMP SQUARE D TYPE _____ MANUAL

HOW IS WELL CONTROLLED: LEVEL _____ TYPE & MODEL _____

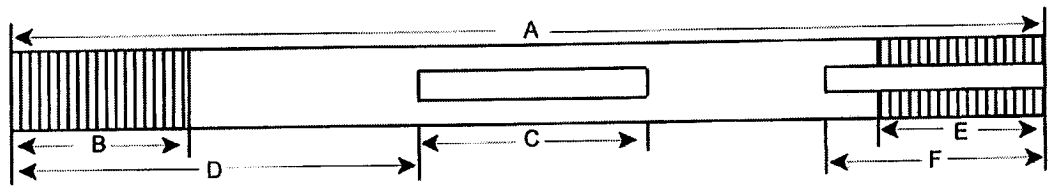
PRESSURE TANK YES NO PRESSURE SWITCH _____ TYPE & MODEL _____

SIZE _____

GEAR DRIVE MAKE _____ MODEL _____ RATIO _____ TO _____

SERIAL NO. _____ STANDARD COMBINATION MODEL WITH A _____ MOTOR STAND

REPAIRED BY _____ REPAIRS MADE _____



A _____ C _____ E _____
B _____ D _____ F _____

SHAFT SIZE

TESTING EQUIPMENT ORIFICE SIZE _____ HOSE YES NO

GATE YES NO SIZE _____ 90° YES NO SIZE _____ SPECIAL FITTINGS _____

REMARKS: _____

STATIC LEVEL 159 FEET CAPACITY OF PUMP _____ GPM AT _____ POUNDS

SIGNED BY ROBERT G. KITCHENS

Waynes County (163)

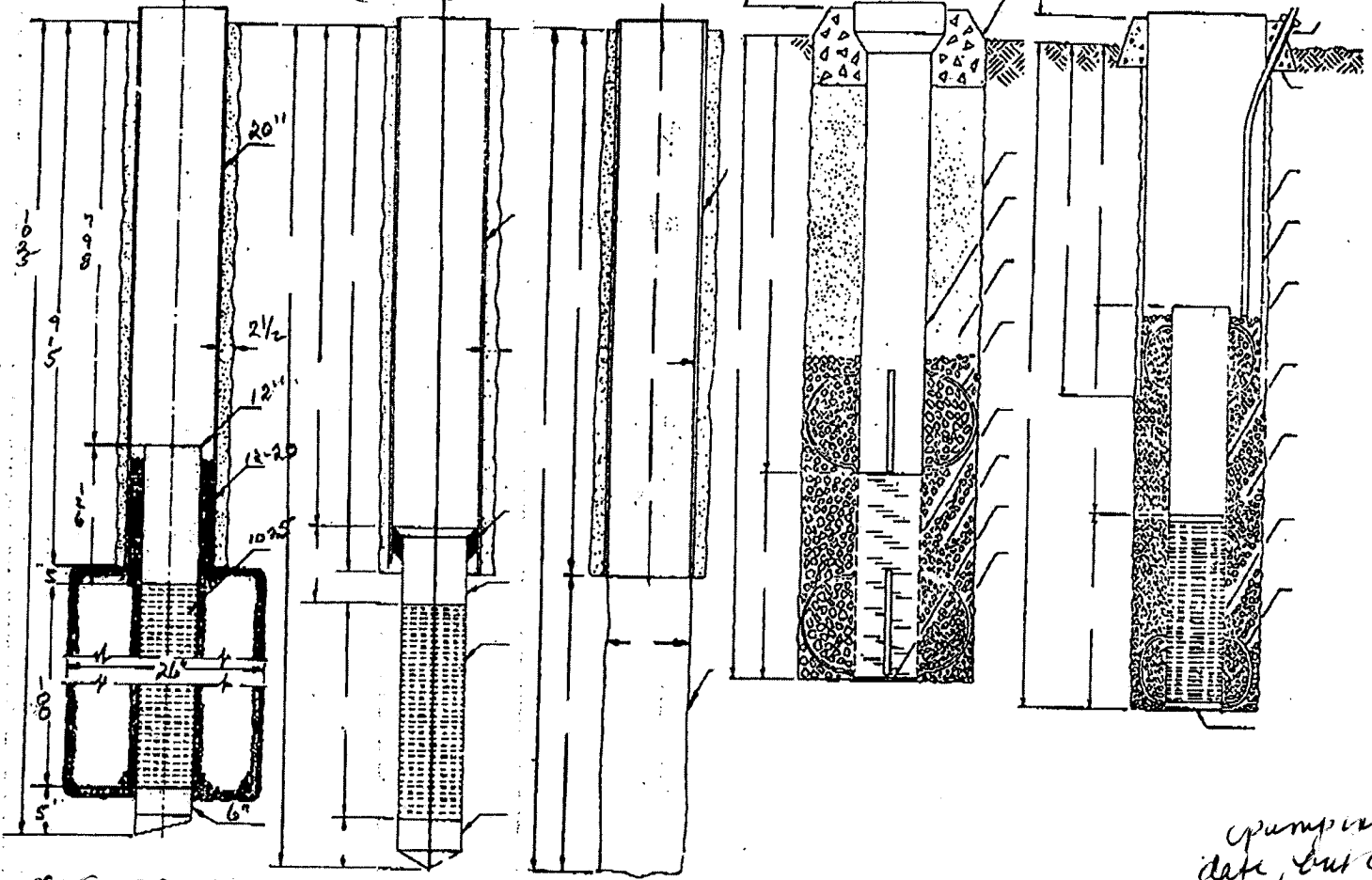
05/22/2012 17:31 2253722330

C.F. Industries Nitrogen LLC

#4737 P.003/003

Log of Well for Formerly Terra Chemicals Well No. 12278
 Address (City) Ya Zoo City (County) Ya Zoo State MS
 Location of Well Top of hill behind plant Made in Test Hole No. 1

SW 16874 G-160 C.F. Industries Well # 17



SAT: 32-54-1223
 Log G-90-22-4-69

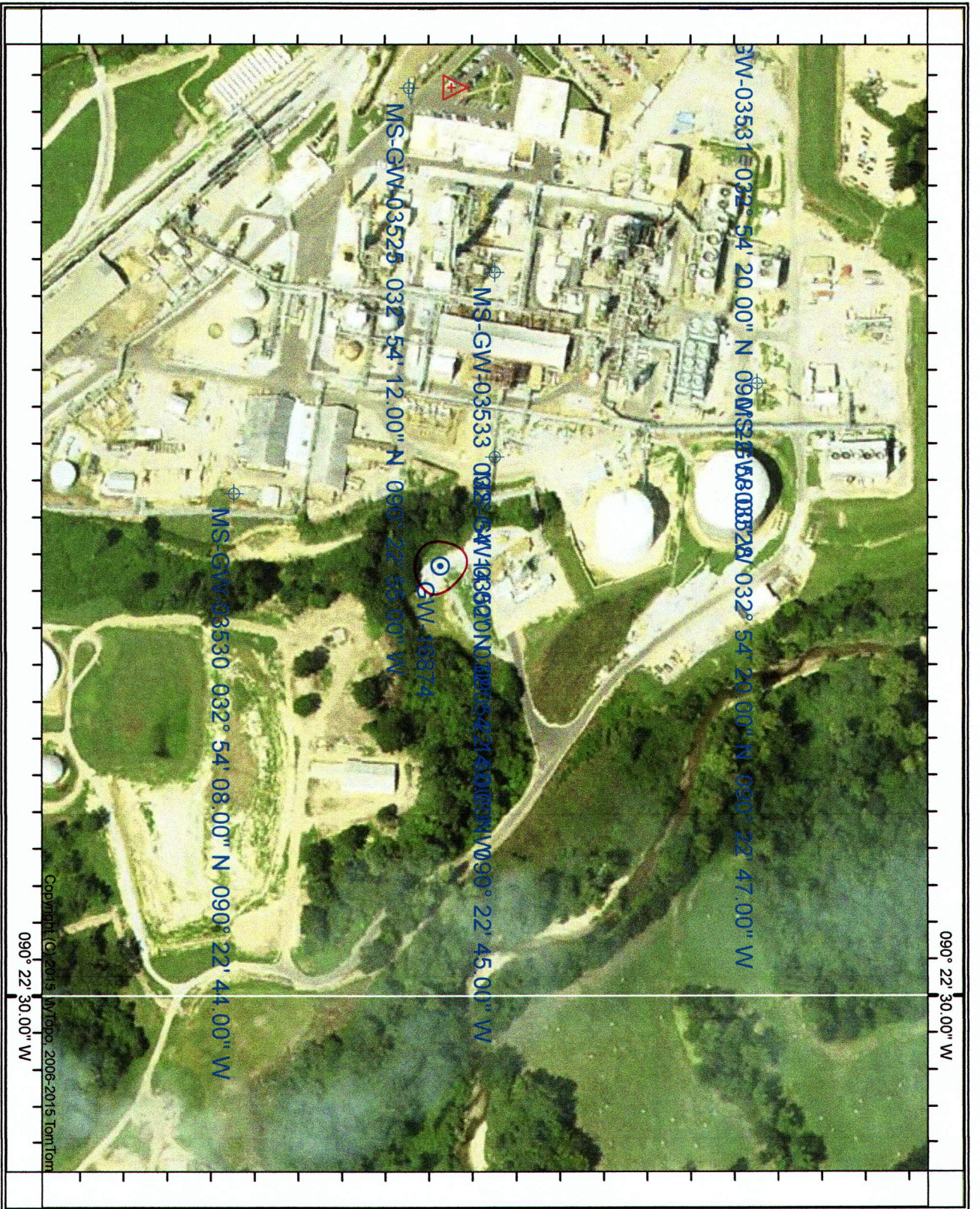
↑ pump install date, but close
 ↑ Fall 2-24-15



Location:
 SW-NW-S11
 T12N, R2W

STARTED WELL _____ 19 _____ AND COMPLETED 3-22-2012
 TOTAL DEPTH 1085' ELEVATION _____ STATIC WATER LEVEL 158'
 ALL MEASUREMENTS TAKEN FROM (GROUND) (TOP OF FOUNDATION) (TOP OF CASING) (TOP BASE PLATE)
 SURFACE CASING; SIZE 28" LENGTH 77' THICKNESS .322 WELDED _____
 CEMENTED WITH 120 SACKS CEMENT _____ OR PACKER TYPE _____
 WELL CASING; SIZE 20" LENGTH 915' WEIGHT _____ T&C WELDED _____
 CEMENTED WITH _____ SACKS CEMENT _____ OR PACKER TYPE _____
 INNER CASING SIZE 12" LENGTH 126' TYPE MATERIAL Black Steel WELDED _____
 WITH 4" x 3" (GUIDES LOCATED) 916-905' TYPE BACKOFF left handed
 SIZE SEAL _____ BACKPRESSURE VALVE 6" SIZE 5' LENGTH GUIDE 2'
 WELL STRAINER: MAKE Johnson TYPE S.S. SIZE 12" LENGTH 100' OPENING 1025
 TYPE MATERIAL stainless steel WITH welded CONNECTIONS _____
 SIZE HOLE DRILLED FOR SURFACE CASING 33" WITH Roller BIT
 SIZE HOLE DRILLED FOR WELL CASING 25" WITH Roller BIT
 SIZE HOLE DRILLED FOR STRAINER 26" WITH header REAMER
 YARDS OF GRAVEL USED _____ HOW PLACED Gravel lmc TYPE 12-20
 HOW WAS WELL DEVELOPED Air lifted SAND? no CLEAR? yes
 FOUNDATION INSTALLED YES DEPTH FEELING RODS _____ TOP OF WELL 798'
 NOTES: left Gravel Two feet from top of LAP.
 RIG USED GD. 2500 SUPT. A.K. Collins DRILLER Jerry Kitchen

LAYNE DIVISION



GW 16874
 32-54-12.23
 90-22-41.69

per Kearney Crockett
 SAH
 6-15-15

CORRECT
 LOCATION