

George
E47
6-25-74

MISSISSIPPI
BOARD OF WATER COMMISSIONERS
416 North State Street
Jackson, Mississippi 39201

CODED

WATER WELL DRILLERS LOG

6-25-1974 date well completed
M+H Shell Co. firm name
George county well located

LANDOWNER: *H. H. H. H.*
Berndale Miss
(mailing address)

description of formations encountered	from	to
<i>Dirty</i>	<i>0</i>	<i>1</i>
<i>Red dirt</i>	<i>1</i>	<i>2</i>
<i>Red clay</i>	<i>2</i>	<i>8</i>
<i>Yellow clay</i>	<i>8</i>	<i>19</i>
<i>Sand</i>	<i>19</i>	<i>25</i>
<i>Red clay</i>	<i>25</i>	<i>35</i>
<i>Blue clay</i>	<i>35</i>	<i>110</i>
<i>Sand</i>	<i>110</i>	<i>131</i>

WELL LOCATION:
sec *18* T *2* N, R *8* E
6 miles N/W of *Berndale*
(distance) (direction) (nearest town)

WELL PURPOSE: *Home*
(home, irrigation, municipal, industrial)

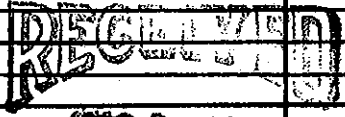
CODED

WELL COMPLETION DATA:

- (1) diameter (inches) *2"*
- (2) total depth (feet) *131*
- (3) static water level (feet) *61* below above top of ground.
- (4) casing *Plastic 5ft*
(material) (depth)
- If telescope see back.
- (5) screen *5ft 126*
(length) (depth to top)
2" *Plastic*
(size) (material)
- (6) pump *1* *3*
(HP) (yield gpm)
Electric
(type power)
- (7) electric log (yes or no) _____

(organization running log)
(8) how well bottom plugged *Back*
was done

DRILLERS REMARKS:



86-1974

MISS. BD. OF WATER COMMISSIONERS