

Bolivar
Q 48
9-2-74

MISSISSIPPI
 BOARD OF WATER COMMISSIONERS
 416 North State Street
 Jackson, Mississippi 39201

CODED

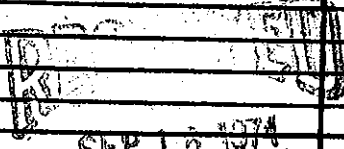
WATER WELL DRILLERS LOG

9/2 1974 *Dalton Well Supply Co* *Bolivar*
 date well completed firm name county well located

LANDOWNER:	description of formations encountered	from	to
<i>Pt. 2 - Shawnee Miss. Ernest M. Knight (mailing address)</i>			
WELL LOCATION: sec. <i>27</i> T <i>21</i> N R. <i>5</i> W <i>4</i> miles <i>South</i> of <i>Boyle</i> (distance) (direction) (nearest town)	<i>Sand</i>	<i>40</i>	<i>115</i>
	<i>lean gravel</i>	<i>115</i>	<i>130</i>
WELL PURPOSE: <i>Home</i> (home, irrigation, municipal, industrial)	<i>gravel</i>	<i>130</i>	<i>145</i>
	<i>Clay</i>	<i>145</i>	<i>193</i>
WELL COMPLETION DATA: (1) diameter (inches) <i>4 X 2</i>	<i>Rock</i>	<i>193</i>	<i>194</i>
	<i>Clay</i>	<i>194</i>	<i>520</i>
(2) total depth (feet) <i>193</i>	<i>Shale & Clay</i>	<i>520</i>	<i>550</i>
(3) static water level (feet) <i>22</i> below above top of ground.	<i>Sand</i>	<i>550</i>	<i>710</i>
(4) casing <i>Gal. pipe</i> (material) (depth) (size) If telescope see back.	<i>Clay</i>	<i>710</i>	<i>756</i>
(5) screen <i>20 ft</i> (length) (depth to top) <i>Stainless Steel</i> (size) (material)			
(6) pump <i>1</i> <i>30</i> (HP) (yield gpm) <i>elec</i> (type power)			
(7) electric log <i>No</i> (yes or no)			
(organization running log)			
(8) how well bottom plugged <i>B.P. Value</i>			
DRILLERS REMARKS:			

set @ 193

CODED



MISS. BD. OF WATER COMMISSIONERS